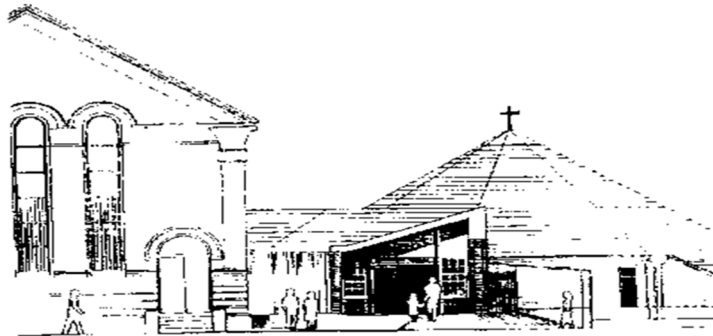
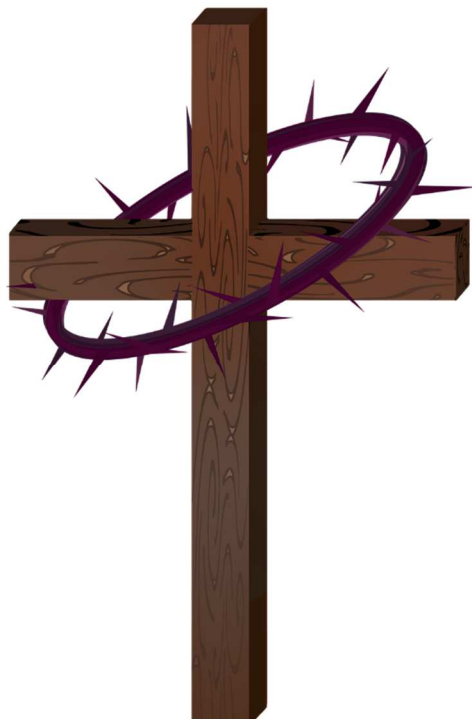


WOODBIDGE METHODIST MUSINGS



March 2026



Message from Our Minister

Lent's timeless lessons to the contemporary challenges.

Let me start by inviting you all to the Lent study series on 26th February, 5th March and 12th March at 10am, venue Woodbridge Methodist church by Rev Saul Tadzaushe.

We will look at the following topics.

Day 1) Does God answer prayers in our contemporary world challenges today?

Day 2) How can we overcome temptations in a world of so many challenges?

Day 3) Why do we worship a suffering and dying God?

We will start each lesson with watching a video of the life and suffering of our Lord Jesus Christ. Teas and coffee will be provided as usual.

Introduction

Lent, through its practices of fasting, prayer, and reflection, offers timeless lessons with profound relevance to the complexities of the contemporary world.

Lent is grounded in historical Christian practices, mirroring Jesus' 40 days in the wilderness (Matthew 4:1-11) as a period of temptation and spiritual preparation.

Richard Foster's Insight: In "Celebration of Discipline," Foster regards Lent as a transformative period, inviting a departure from destructive habits to foster new spiritual growth. We will be sharing more examples how on the testimonies of people who were saved by the grace of God

1. Psalm 139:23-24 invites believers to invite God's scrutiny, highlighting the importance of personal reflection: "Search me, God, and know my heart."

In today's distracting world, Lent encourages self-examination and spiritual alignment with God's. Emphasizing prayer and meditation during Lent fosters personal clarity and spiritual depth.

2. Isaiah 58:6-7 emphasizes true fasting as an act of justice and compassion, rather than mere ritual: "Is not this the kind of fasting I have chosen: to loose the chains of injustice?" Confronted with consumerism and excess, Lent's disciplines challenge modern desires and promote spiritual focus.

Fasting encourages mindfulness and restraint, fostering a counter-narrative to materialism. Though fasting may not be a common practice today. I hope the three days Lent study series will help to understand the will of God. God willing invite a medical practitioner and a theologian to come and share with us the benefits of fasting.

3. Matthew 25:35-40 underscores the call to serve others, positioning charity as an essential Lenten practice: "For I was hungry and you gave me something to eat." With increasing social inequities, Lent's call to charity speaks directly to the need for societal compassion and justice.

Service and almsgiving during Lent empower communities to address injustices and embody faith in action. It may be small but not something that would not be compared with whatever contribution. Any contribution would make a difference. Easter exemplifies hope and renewal through Christ's resurrection, providing assurance and inspiration amid today's uncertainties (1 Peter 1:3): "In his great mercy, he has given us new birth into a living hope through the resurrection of Jesus Christ from the dead."

The resurrection narrative affirms life overcoming death and hope triumphing over despair.

Echoing Foster's insights, Easter is not just the end of Lent but a transformative beginning, urging believers to embrace renewal and new life with spiritual resolve

Conclusion

Lent's emphasis on reflection, discipline, and compassion offers applicable guidance for today's challenges, encouraging an intentional, justice-oriented life. Coupled with Easter's message of hope, these practices form a spiritually enriching journey, providing clarity and purpose while addressing contemporary issues. Through the lens of scriptures and Foster's guidance, Lent and Easter are pivotal in navigating the moral and existential trials of the modern world.

May the good Lord bless us all as we study the significance and relevance of lent not just for acquiring knowledge but for the transformation of humanity and the world at large.

Rev Saul Tadzaushe

WOODBIDGE FAMILY NEWS

**Listen! I am standing at the door knocking:
if you hear my voice and open the door,
I will come in to you and eat with you,
and me with you. Revelation 3, 20**

This passage was part of the Bible Study which Roger Theobald led in February. We felt that it inspired the famous Holman Hunt painting in St Paul's Cathedral and Keble College, Oxford, which is similar to our stained-glass window. Roger pointed out that in the painting there is no handle on the outside. The hearer must open the door!

Once again news of our church family members has been arriving on my e-doorstep and sometimes in person. We thank God for all His blessings as we support each other when and wherever we can.

We heard of the passing of **John Kendall** after several years of ill-health. Our prayers have been with **Shirley** and her family, including her son David who lives with them and her daughter Louise, who has travelled up from Dorset. We await details of the funeral arrangements. John and Shirley were very organised when they were well.

Unfortunately, several of our congregation have had medical needs, and some have had visits to hospital, including **Derek Rothwell**, **Diana Luxmoore** and **John Lloyd**. Derek Rothwell's operation was a success but as we went to print, he was awaiting tests for his kidneys. 96 year-old **Mike Rowland** was admitted to Ipswich hospital after a fall. He was subsequently confused but this cleared up. He was supported by his son **Anthony** and **Abi Hasset**, visiting regularly. **Ron Hepworth** too. As many of us know, **Dela Lloyd** needs regular checking of her sickle-cell condition but recently she had a disturbing diagnosis with repercussions for her treatment.

In December we bade a sad farewell to **the Porter family** who have settled, after several trials, near Newcastle, where Bryony has an important role as a newly-qualified diagnostic radiographer. May God continue to richly bless the Porter family's lives in the sunny north-east. There is a separate news item in this Musings from Michael! Enjoy and be astounded, in equal measure.

Some great news reached us from our sister-church in Framlingham. **Helen (née Glasse) and Sam Brown** who were married in our church, and then moved to north Kent. They have had a daughter, **Lillian Beatrice**, born on 18th June and weighing 8lb 5oz. Parents and daughter are all doing well when last we heard, and grandmother **Nichola Glasse** who led our worship and preached at our church on 8th February will be helping the family.

Some other great news reached us from the village of Bredfield: **Sandra and David Ball** have started dancing rehearsing again, after Sandra fell and broke both her wrists at the end of last year. Aiming for the National championships again, dear friends?

This item in the Ipswich press reminded me of a beloved Methodist local preacher we often had the pleasure of having at WMC:

“Fore Hamlet housing development in Rose Hill was officially opened on Friday delivering 30 new flats to the town. During the opening ceremony, the project was renamed the Roger Fern House – in honour of former Ipswich mayor **Roger Fern**”.

On Sunday 1st February we were privileged to be part of a very special service of worship. Firstly, **Revd Saul**'s excellent sermon was recorded as part of his studies for a Master's qualification at Cliff College. He also introduced us to **Debbie**, a member of one of the eight AA groups which meet at our church. Debbie spoke eloquently about how she had been involved at the periphery of our church when her children were young, how **Peggy Baker** had welcomed her to the Parent and Toddler group and looked after her twins, then how they attended the Youth Club, run by **Stephen and Louise Caley**. Debbie had become addicted to alcohol and so the AA group was a life-saver (*my words*). She has now decided to dedicate her life to Christ. Alleluiah! (Not a word you hear often exclaimed in our churches these days. It means "Praise the Lord". PtL for short!)

He's got the Whole world in His Hands

StF 536

On Sunday 22nd March, our former minister **Revd Frank Aichele** and **Gabi** will be returning to lead our worship, alongside Revd Saul. Frank was the **European Methodist Church (EMK) Secretary**, in charge of (contacting, visiting, encouraging and auditing) all the ministries (countries, districts, circuits and churches) which the EMK supports in countries in parallel to those which the British Methodist church supported. Many of these are non-English speaking

countries, eg German (Namibia) or Spanish (South American) or Portuguese former colonies. Frank has provided a summary of the work – see separate article - he did after serving here in East Anglia, initially as EMK Secretary and then as a circuit minister with other responsibilities, for this edition of the Musings. The stewards are organising a **“Bring and Share” lunch** after the service on 22nd March before Frank and Gabi drive off to Heathrow Airport. Please sign up on the noticeboard for your culinary contribution and come along to this less formal chance to meet Frank and Gabi.

The day afterwards, by chance, on **Monday March 23rd at 7.30pm** the **Woodbridge Orchestral Society's** end-of-season concert will take place at our church. The orchestra will be performing works by seven English composers, including Delius, Elgar, Butterworth and Sullivan, in a programme of music inspired by opera and theatre, folk dances, environmental protest (?!) and the English countryside. A raffle will be held and complimentary refreshments will be served after the concert. Admission is free with donations in aid of our Church Renovations requested. Further details from indefatigable Helen Lewis: helenm1960@btinternet.com or phone 01394 411232.

Monty

First woman confirmed as Archbishop of Canterbury

Dame Sarah Mullally has been formally confirmed as the first female Archbishop of Canterbury, the Church of England's most senior bishop. At a historic service in London on 28th January, she committed to tackling misogyny, improving safeguarding, and navigating divisions within the Anglican Communion. Her appointment has been met with both celebration and criticism, highlighting the challenges ahead for her leadership. We pray for our Christian Anglican friends in the UK and the world.

CIRCUIT PRAYER MEETINGS

Everyone from around the circuit is welcome to join together at our weekly prayer meeting on Zoom to pray for events and opportunities in our circuit and so much more

We meet at **9:00am on Tuesday mornings**

For more details and for the Zoom link please go to the Ipswich Round

www.methodistic.org.uk/category/ipswich-round/

Bible Reading Fellowship

The Bible Reading Fellowship has been producing Bible daily notes for many years, in a variety of styles to suit readers of all ages and needs. The most popular are New Daylight and Upper Room to which several members of our church subscribe. The next notes will go from May to August

- **New Daylight** offers a daily Bible reading and reflection for anyone who wants to go deeper with God. A 4 month sub is £5.99, with a larger print Deluxe version at £7.25
- **Upper Room** where the world meets to pray. There is a worldwide readership of around 3 million. Each daily reading and comment is provided by writers from all over the world seeking to share their insights of faith and experience with others. A 4 month sub is £5.99
- **Guidelines** Bible Study for today's ministry and mission. A 4 month Sub is £5.99.

In the past subs have been yearly but the BRF are changing their practice, and for this first time only, starting in May, the price will be £5.40 with the Deluxe version at £6.52.

I order a Group subscription each year for members of our Church Family. If you would like to join us please let me know and I will add you on. I collect the Sub before the next issue which is delivered prior to the start in May. As long as we have at least 6 subscribers the postage is free. At present I have 5 but also several from Hollesley village.

Helen Lewis 01394 411232

Felixstowe Methodist Church Proposals

Our Christian "Siblings in Christ" on the Felixstowe peninsula are seeking Circuit Meeting support in principle for a project and feasibility study to consider how they might re-purpose some of the five buildings which they are at present responsible for. In discussion with various individuals, organisations and the Local Authority over the past couple of years and after much prayer, the one thing which has become clear is the great need for social housing - accommodation which is truly "affordable". Therefore, the current scope of the project is as follows:

- Work with partners (e.g. a Housing Association) to create social/affordable accommodation on the Seaton Road site whilst still retaining a Church/Community space.
- Re-purpose some of the building @ Trinity to create some single-person accommodation and, also, look to how they can reconfigure the Church area to create more space and to make the building more welcoming. They also want to create something which will enable the Church to be open and available to the public for longer periods of the week.

Within all this they are striving towards a net-zero carbon solution. They are requesting support of the Ipswich Circuit Meeting.

Eco Church

Eco Church.....Simple ways in the garden!

This is the time of year when we look forward to warmer days, and time to spend outside, to feel God's warmth and sunshine, after what can only be described as a rather wet and dismal winter! Our thoughts turn to the garden, but also to what may look at an unsurmountable task of taming it!

As an Eco Church we want to look after God's creation which has been let down over many years of over cultivation, reducing our insects and birdlife, in part through ignorance. As we have tried to produce perfect crops and gardens we have killed many of the good insects and plants as well as the bad ones, and the balance of nature has been upset. Now, some of us here in our Church Family have less energy as we get older, and we see our gardens as an uphill struggle.

The birds and wildlife will appreciate us if we leave some areas to fend for themselves, providing the secret places and refuges for our insects and birds to survive and thrive. Even an old washing up bowl sunk in the ground kept filled up with water will provide a much needed drink for birds and other wildlife especially in times of summer drought. Shade in the hot weather, which will surely come eventually, will be a safe refuge for all.

Our grass, which used to be mown in stripe patterns, can be left to grow tall, except for a pathway or two until later in the year. Wild flower seed sown in the beds will attract the bees and butterflies which will be a delight for them and us.

Raised beds have become very popular as it's easy to cultivate a smaller area at a height which saves the backbreaking bending. These days we are recommended not to dig the ground, but to pull out weeds, put them in a compost heap along with vegetable peelings etc from the kitchen, and even shredded paper and cardboard. In a few months the home made compost can be spread on our raised beds and will conserve moisture in dry weather and help the plants to grow.

There are some home grown vegetables which are cheap or free to grow, and are far better than anything from the supermarket. In particular dwarf and runner beans (seeds saved from last year?), courgettes and 'Salad Bowl' cut and come again lettuces are all outstanding. Tomatoes, in a large pot, on a sunny sheltered patio, a balcony or in a greenhouse cannot be beaten. All these can be started off from seed in a propagator, on a kitchen window sill or bought as small plants from a garden centre. Your produce will have no food miles, be wonderfully fresh and absolutely delicious, and some can be made into soup or frozen for use next winter.

Do share your experiences as the year progresses, perhaps at Coffee-time after church.

Happy Gardening!

Helen Lewis

Helen

GIFT AID

By the time you read this we will be into the final month of this fiscal year, and I would like to thank everyone who Gift Aid donations as this brings a welcome boost to the church finances. A recent example being the G.A we can claim on the donations made for the new front doors, which will amount to well over £800.

GIFT AID SMALL DONATIONS SCHEME (better known as GADS) is another source of income on small cash donations of up to £30. The weekly loose cash collection, donations for the Sunday refreshments, and any donation only fund-raising events allow us to claim money back from HMRC. and as a well know supermarket likes to tell us, "Every little helps".

If you are a taxpayer and would like more information about Gift Aid, please have a word with Our Treasurer Freddie or myself.

Anne Stevenson

God's First Name?

Parents sometimes find their children confuse what they have heard in church or school, even as to whether God has a first name!

Here are a few of the best confusions on God's first name:

1. "Andy"

According to many churchgoers, God's name is Andy.

The famous hymn clearly states, "Andy walks with me, Andy talks with me..."

2. "Howard"

This one comes straight from the Lord's Prayer.

"Our Father, who art in heaven, Howard be thy name."

3. "Harold"

A classic variation of the Howard theory, often cited by children at Christmas.

"Hark! The Harold angels sing!"

4. "Art"

Another one from the Lord's Prayer.

"Our Father, who Art in heaven..."

5. "Peter"

"Praise Peter God from whom all blessings flow".

Monty

Cafe Worship

Our theme for our Cafe Worship in January was LOVE

John 13 v34-35

'A new command I give you: love one another. As I have loved you, so you must love one another. By this everyone will know that you are my disciples, if you love one another.'



After listening to 1 Corinthians 13

["Love Is Patient and Kind" - 1 Corinthians 13 \(Bible Animation\) | Logos](#)

[Bible Software - YouTube](#)

We thought about what LOVE looks like rather than feels like

John Wesley described God's Love as "free to all and free for all"

The Methodist Church's calling on love is rooted in the desire to see communities transformed for the good of all. It is a response to the gospel of God's love in Christ and involves living out its discipleship in worship and mission.



We spent time discussing

“How does our church show LOVE in our community?”

Here are some of our responses



**May the God who is LOVE,
fill your heart, guide your
steps and send you out to
LOVE and serve those that
you meet. Amen**

MOVING NEWS FROM THE PORTER FAMILY

Michael wrote on 4th February: (Like the space probe: The Eagle has landed!)

We have indeed landed - we arrived at the empty house on Friday and were today re-united with our furniture, a few essentials and our clothes! After 4 days of simple 'camping out' we are looking forward to sleeping in our own bed again, but that will have to wait until tomorrow at least as the bedroom is full of boxes and the bed is in at least a dozen pieces! Hope I can remember how to stick them together again, preferably in the right order - then we will have to do Bryony's bed too. At least we are getting settled - we actually emptied about 20 boxes of things today and have about another 100 or so to go.

It was a good idea to write on the outside of the box what was in them, but we are enjoying all (and there have been many) the little surprises as things are not always what they say on the tin! (mostly my writing too - can't understand that at all!)

Seriously, we are beginning to feel that we are 'here' and 'settling' - Bryony is still working (hard too!) and will be moving completely in with us by the end of the month when there is space to bring her things up to the bungalow from her flat. BT is not exactly helping - we are still without a telephone - we have a number but it doesn't work yet and the internet is somewhat limited until they can make a connection between their wires and my modem!

Our washing machine also arrives this coming Friday - so the few clothes we were carrying with us will be able to appreciate the freshening feel of a good wash! Biggest difference is the water - much less hard than East Anglia - much easier to wash in but it does make the tea and coffee taste 'weak' - had to use 3 teabags in one teapot today to be able to taste it.

We both miss the many blessings we found at WMC - but just at the moment we are so tired we will be spending the next few days catching up with the sleep loss over the past 2 months!

WOODBIDGE ORCHESTRAL SOCIETY (WOS) – forthcoming concert



The orchestra performing with conductor Jonathan Abbott (photo: Doug Rice)

The Woodbridge Orchestral Society's end-of-season concert will take place on Monday March 23rd at 7.30pm at the Methodist Church in St John's Street, Woodbridge. The orchestra will be performing works by seven English composers, including Delius, Elgar, Butterworth and Sullivan, in a programme of music inspired by opera and theatre, folk dances, environmental protest and the English countryside. A raffle will be held during the evening and complimentary refreshments will be served after the concert. Admission is free with a retiring collection in aid of Church Renovations. Further details can be found on the WOS website www.woodbridgeorchestra.org or alternatively contact helenm1960@btinternet.com / phone 01394 411232.

NEWS FROM FRANK AND GABI

As there are new members of our congregation who will not know or remember the ministry of Revd Frank Aichele and his wife Gabi here in East Suffolk, we are pleased to publish this summary of their news:

Frank and Gabi hail from the Swabian area of southern Germany, in the State of Baden-Württemberg, not far from Stuttgart. The United Methodist Church (EMK) in Germany responded to the invitation of the British Methodist Church (BMC) to send a pastor under the World Church in Britain Programme for ministers from Partner churches worldwide and asked Frank to come to Britain in 2002. The one year appointment of Revd Jeremy Hajdu-Paulen from Oregon was just coming to an end.

Frank served as the minister of three churches: Woodbridge, Framlingham and Orford, from 2002 to 2010. During this time he was also involved in the BMC World Church Office and its activities.

While here in England, Gabi trained and worked as an early-years playworker, finally managing an afterschool club in Rendlesham.

Because of the experience he gained in GB, Frank was asked by the EMK to head their World Mission Department, based in Wuppertal in North Rhein-Westphalia (a historically important city in Protestant Germany). So they both moved there in 2010 and Frank started his work as "Mission Secretary". This involved keeping in contact with and visiting all 12 partner-churches of the EMK. Eight of them are African churches in countries like Sierra Leone, Liberia, Ghana, Nigeria, Kenya, Malawi, Mozambique and South Africa. So regular visits to these churches plus two partner churches in South America (Uruguay and Brazil) and the fundraising for the supported projects, the selection of Mission partners and their welfare kept him busy. Gabi's qualifications in GB were accepted by the German Authorities as "nursery teacher" and consequently she has worked and still works as a teacher in different nurseries since 2010.

Frank decided not to work as Mission Secretary until retirement, so in 2013 he started work as the Pastor leading 2 circuits as well as being coordinator for migrant ministries of the EMK in Germany. Both moved to a flat in Hanau, a city about the size of Ipswich, in Hessen, about 25 km east of Frankfurt am Main, Germany's financial hub.

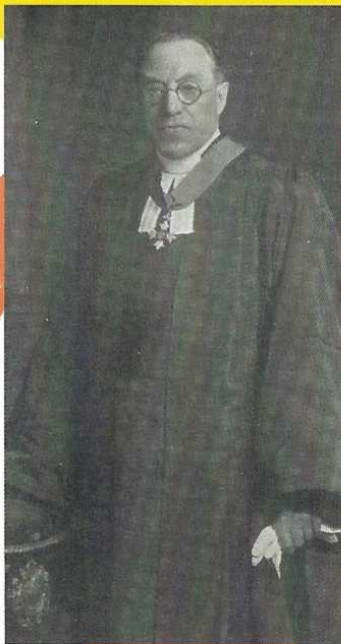
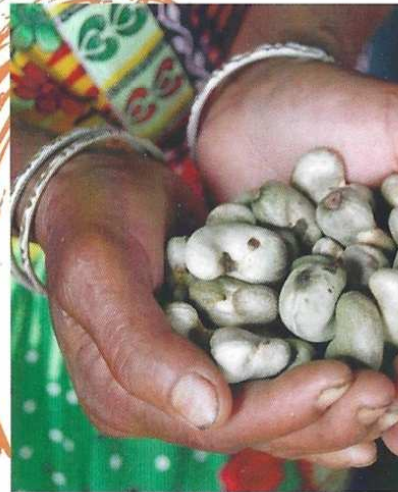
Meanwhile the EMK has changed its structure considerably, so creating a new big circuit in the Frankfurt area that has a similar membership to Ipswich circuit in 2002 (around 1000 members) but is geographically much bigger (90 miles east to west, 40 miles south to north). So Frank is back in a structure, he knows well from the time in GB and has been able to help the restructuring in Germany. Gabi now works in a nursery run by the Protestant church in Hessen only 2 miles away from their home, so she can walk or cycle to work.

DO ALL YOU CAN

OUR JOURNEY

All We Can is an organisation with a tradition of challenging injustice, and striving for a world where every community has the power, dignity, and resources to lead their own futures.

All We Can was founded by the Methodist Church in the 1930s, and we're proud to continue the legacy of making meaningful, positive and sustainable difference to people's lives.



1930s

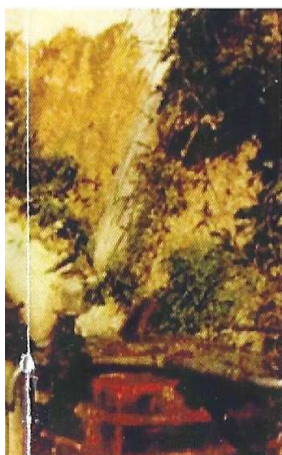
Methodist minister Henry Carter pioneers Methodist Refugee Fund to improve conditions for refugees, particularly in Austria and Germany

1940s

Became known as the Methodist Relief Fund (MRF)

'LET ME DO ALL THE GOOD I CAN, TO ALL THE PEOPLE I CAN, AS OFTEN AS I CAN, FOR I SHALL NOT PASS THIS WAY AGAIN'

John Wesley, co-founder of Methodism



1950s

Supported the building of Wesley Village in Hong Kong following civil war in China

1960s

Supported Methodist agricultural colleges in Tonga and Haiti



1990s

MRDF income reaches £1m for first time

2000s

The Boxing Day tsunami in 2004 resulted in the biggest emergency appeal response to date, raising £1.5m

Irpinia Earthquake strikes southern Italy leaving 300,000 people homeless. MRF provided caravans as emergency accommodation, and 250 volunteers spent Christmas driving them across Europe.



2010s

MRDF becomes known as All We Can on 8th April 2014

PRESENT DAY

All We Can works with partners and organisations to support long-term development as well responding to crises around the world

1980s

World Development Fund and MRF merged to form Methodist Relief and Development Fund (MRDF)



PRAY NOW

Loving God, thank you that it is your love that motivated faithful Methodists to act nearly a century ago. Thank you that All We Can continues to work in long-term partnerships in six countries, and Methodist churches in four regions. Thank you that it continues to respond to crises around the world, by supporting humanitarian organisations in times of emergency. Please guide and strengthen them. Amen.

Sunday Preachers

March

1st P Howes

8th B Barclay

15th G Goodall

22nd S Tadzaushe/ F Aichele Communion

29th Local Arrangement

Part of our Mission Statement is 'Serving the Community'
Our church buildings are used regularly throughout the week -
find out what they are being used for

Sunday – weekly

10:45am ~ Morning Worship

7:30 – 9:00pm ~ AA

Monday – weekly

9:30 – 11:45am ~ Car park used by St John's The Hub Cafe

12:30 – 1:30pm ~ AA

2:00 – 4:30pm ~ ActvLives

7:00 – 9:30pm ~ Woodbridge Orchestral Society (September to Easter)

3rd Monday – 6:45 – 9:00pm ~ Woodbridge Labour Party

Tuesday – weekly

8:00 – 9:30am ~ AA

9:30 – 11:00am ~ Yoga

1:30 – 4:30pm ~ Britten Pears Art Org

6:30 – 7:30pm ~ AA

7:00 – 9:00pm ~ Creative Writing

7:00-8:00pm Church

7:00 – 9:00pm ~ Gateway (Term Time)

Music Group

Wednesday – weekly

7:30 – 8:30pm ~ AA

1st Wednesday – 7:00pm ~ Stewards Meeting

2nd Wednesday – 7:00 – 9:00pm ~ WI

Thursday – weekly

9:15 – 10:30am ~ Yoga

12:30 – 1:30pm ~ AA

7:00 – 9:00pm ~ Love to Sing

1st Thursday – 7:30 – 9:30pm ~ Sutton House Group

3rd Thursday – 10:00am ~ Midweek Communion

Friday – weekly

7:30 – 9:00pm ~ AA

Saturday – weekly

8:45 – 10:15am ~ AA

9:00 – 10:00am ~ Table Tennis, 3rd Saturday Men's Breakfast

10:00am – 12:00pm ~ 3cs Cafe

Please check the church diary on the website for any one-off bookings

<https://woodbridge.methodistic.org.uk/>

WOODBIDGE METHODIST CHURCH CALENDAR

Regular Events

Join us for worship at 10:45am every Sunday

Every Saturday 3C's Cafe 10am – noon in the Octagon

Midweek Communion Services take place on the 3rd Thursday of each month at 10am

Stewards Meeting are held on the first Wednesday of each month

There are also various House Groups

Men's Breakfast meets each month

Ladies Group meets each month

March

Sunday 15th – Mothering Sunday

Sunday 22nd – Rev Frank Aichele leading our Morning Worship followed by a
Bring and Share Lunch

Monday 23rd – Woodbridge Orchestral Concert

April

Sunday 5th – Easter Sunday

Sunday 26th – Community Service at 4:00pm

May

Sunday 3rd – Church ACM following our Morning Worship

For more details or to add a date to the calendar
please speak to Steward or email wmcstewards@gmail.com



The monthly newsletter for Woodbridge Methodist Church

Church Contacts

Minister Rev Saul Tadzaushe

Phone 01394 383674

Email: nmaminister@methodistic.org.uk

Please Note: Saul's day off is on Fridays

Stewards: Email: wmcstewards@gmail.com

Web: woodbridge.methodistic.org.uk

N.B. Items for the April WMM must be in no later than
08/03/2026

Please email to Brian Crowe at:

wmclink.articles@gmail.com

